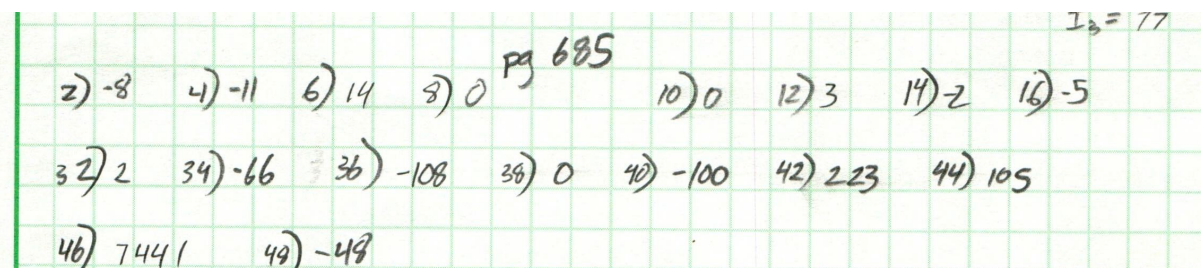


Advanced Math  
8-4 Solutions



- 64) a) 0  
 b) -1  
 c)  $\begin{bmatrix} -2 & -5 \\ 4 & 10 \end{bmatrix}$   
 d) 0

- 66) a) 0  
 b) -7  
 c)  $\begin{bmatrix} 7 & -4 & 9 \\ 8 & -6 & 3 \\ 6 & -2 & 15 \end{bmatrix}$   
 d) 0